



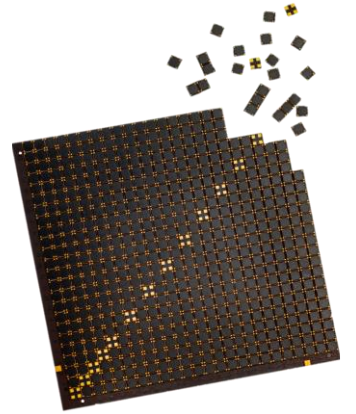
Small is Powerful

Jonas Wærn - CEO



JONDETECH SENSORS IN BRIEF

JonDeTech is a Swedish sensor technology company listed on the NGM stock exchange, Sweden.



Unique Nano Technology

Based on +15 years of research Jondetech has developed a unique nano-technology thermopile based on a plastic substrate.

Exceptional Products

JonDeTech have developed and are selling the world's thinnest Heat Flux and IR (infrared) sensors, that excel in the areas of heat flux measurement, presence detection and contactless temperature measurement.

Fabless Production

JonDeTech has Fabless production setup with two separate European factories which enable a flexible and scalable high-volume production depending on customer demand.

Scalable market

JonDeTech's sensor technology has significant market potential with a scalable business model, centered around the innovative sensor technology with diverse applications in consumer electronics, IoT and healthcare solutions.

THE FUTURE OF SENSOR TECHNOLOGY

Vision

Empowering innovation through cutting-edge sensor technology, we inspire and enable our customers to create revolutionary applications that transform markets.

Mission

As a global supplier in sustainable sensor solutions, we are committed to develop, produce, and distribute high-quality sensors that advance technology and sustainability

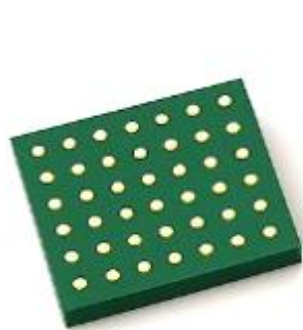
Our promise

Support our customers to integrate cost- and space efficient solutions in complex environments without compromising performance.

Development

Leveraging our expertise in sensor technology, and supported by a robust network of global partners, we are dedicated to pioneering advanced sensor products that set new standards in the industry.

PRODUCT PORTFOLIO



JIRS30



JIRS30D



JIRS40



JPS20



JIRS45D

Unique design, market leading performance

Low-cost, analogue interface

Low-cost, proximity digital interface

Low-cost, digital interface

Heat Flux



Contactless temperature



Presence Detection



ONGOING EVALUATIONS

Heat flux

- Wrist watches
- Ear buds
- Smart patches
- Monitoring EV batteries
- Gaming controls
- Gas stoves



Presence detection

- Keylock, leads in several regions
- Urinals
- Alarm systems / doorbell
- Robot vacuum cleaners
- Presence in Cars



Temperature measurement on distance

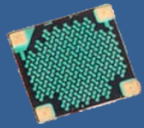
- Coffee machines
- Fire detection



PRODUCT ROADMAP

2025

Finalize commercial launch and move higher up in the value chain by offer customers digital solutions.



JIRS30
Commercial
status



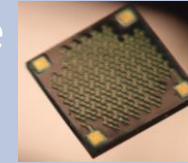
JIRS30D -
Digital solution
JIRS45D -
Digital Solution

2026

Optimize our core technology products with focus on size and cost.

“JIRS30 2.0”

- 2x2mm size
- Lower cost
- Increased performance



“JIRS30D 2.0”

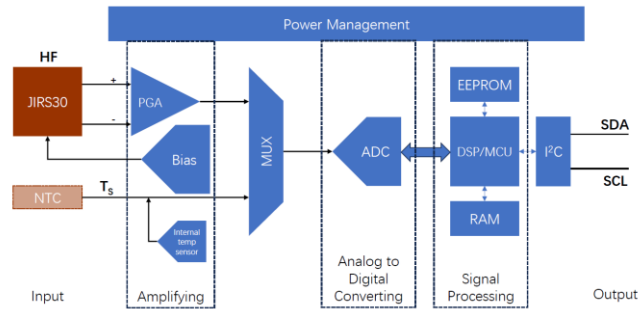
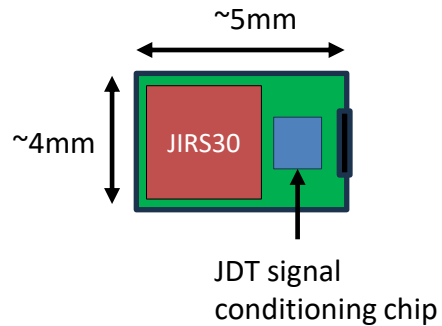
- Custom ASIC
- Smaller size
- Higher performance



PRODUCT ROADMAP - INTEGRATED DIGITAL MODULE

JIRS30D - digital module

Core Body Temperature module with digital I2C output, including JIRS30 heat flux sensor, skin thermistor sensor and digital signal processing with Core Body Temperature Algorithm.



JIRS30 CBT algorithm

R&D is developing a robust and reliable Core Body Temperature algorithm that calculates the core body temperature based on skin heat flux and temperature. First release is scheduled to be available

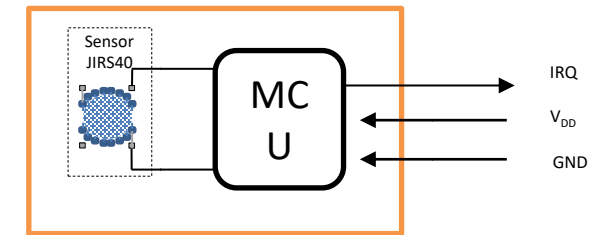
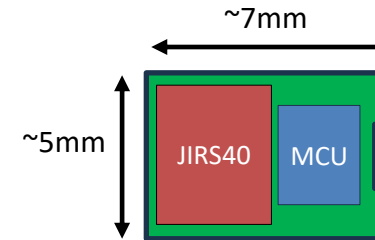
end of May this year.

$$T_c = T_s + (HF * QR1) / K * QR2$$



JIRS45D - digital module

Based on customer feedback Jondetech are also planning to develop, together with a production partner, a digital module version for JIRS40. This module will have a digital I2C interface and includes both JIRS40 and presence detection algorithms.



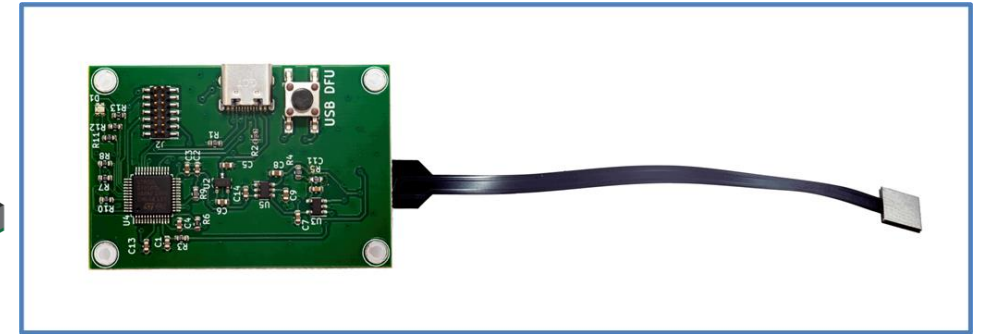
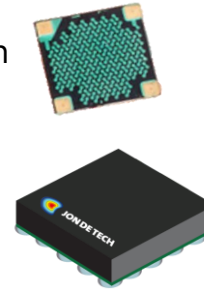
JIRS45D

JIRS30/JIRS30D – HEAT FLUX – PRODUCT & APPLICATIONS

Measurement of body temperature

JonDeTech's sensors measure heat flow with high accuracy in consumer products such as smart watches or other products that sit on the body enable the ability to measure the internal body temperature with high precision.

- Works in earphones, wrist sports watches and HRM chest straps.
- Monitoring health and optimize performance during sport activities.
- Accurate measurement of the core body temperature with a Heat flux sensor patch instead of a rectal thermometer or electronic pills.



Evaluation kit JIRS30

Smart buildings and IoT

JonDeTech's sensors can be integrated into smart buildings, such as offices, EV-cars and homes, and delivers measurements for temperature and humidity.



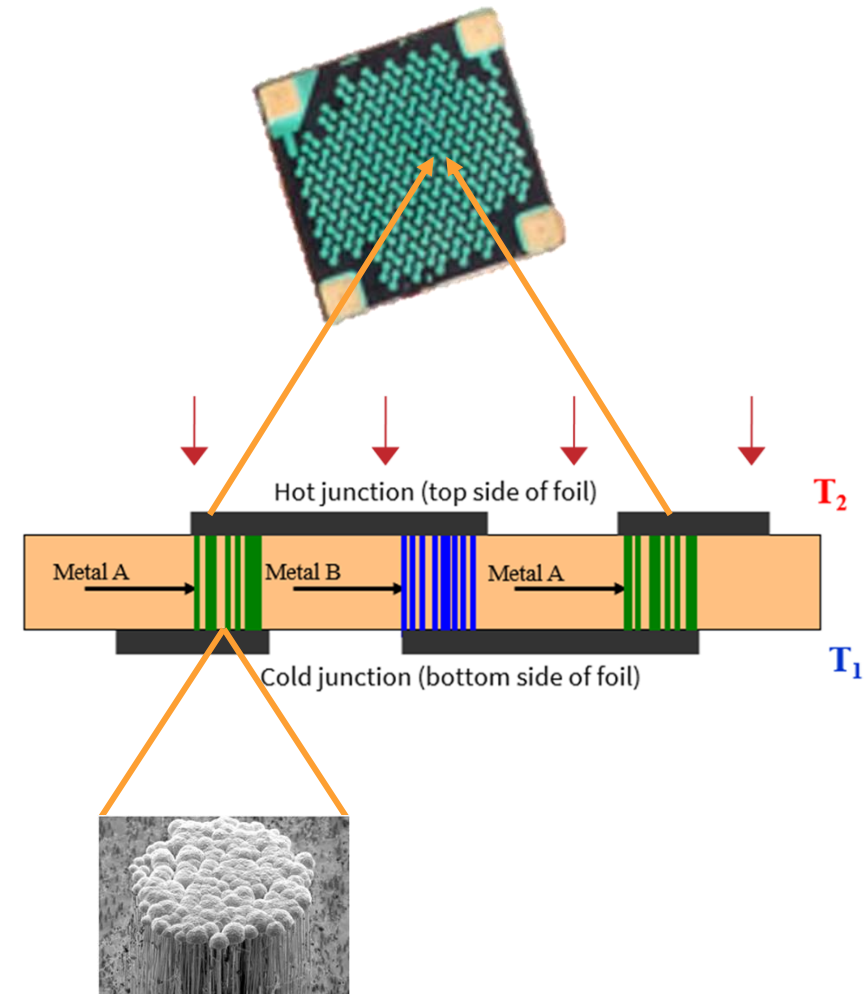
JIRS 30 – TECHNOLOGY

JonDeTech's technology in short

JonDeTech has developed the worlds thinnest thermophile, with a vertical structure instead of the traditional horizontal construction using nanotechnology. This configuration not only facilitates temperature measurement but also heat flow detection.

The product portfolio is supplemented with two silicon MEMS (microelectromechanical systems) sensors.

JonDeTech's sensors works a bit like a super-sensitive digital camera that doesn't capture regular pictures but instead sees the world through heat.



JIRS30 – COMPETITIVE ADVANTAGES

Performance

JonDeTech excels in performance, offering high accuracy and reliability in temperature measurement and presence detection.

Size

JonDeTech stands out with its compact size, ideal for integrating into various applications where space is limited.

Thickness

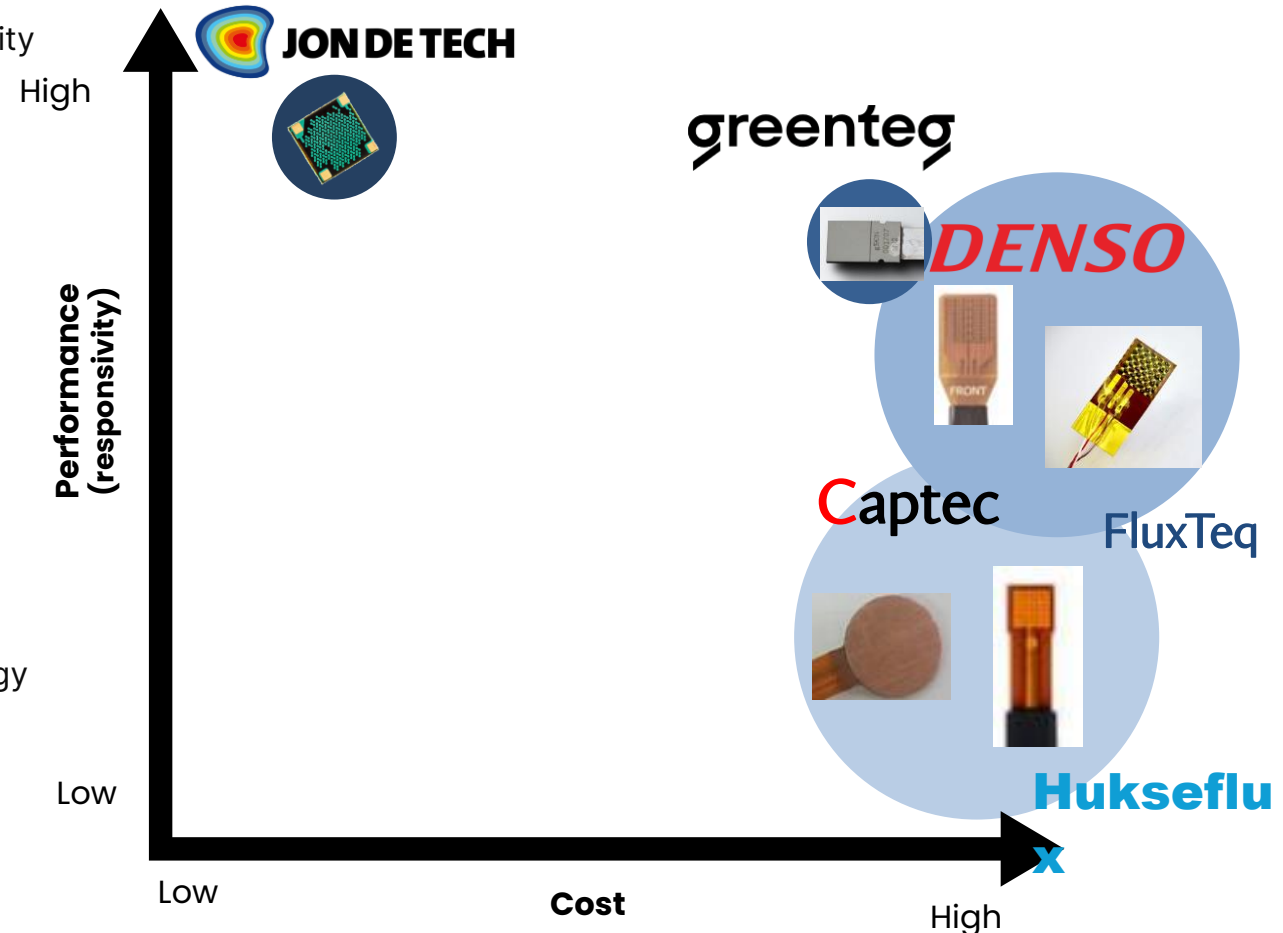
JonDeTech's sensors boast an ultra-thin profile, enabling seamless integration into thin devices and applications without compromising performance.

Price

JonDeTech offers competitive pricing, making its advanced technology accessible and cost-effective for a wide range of markets and applications.



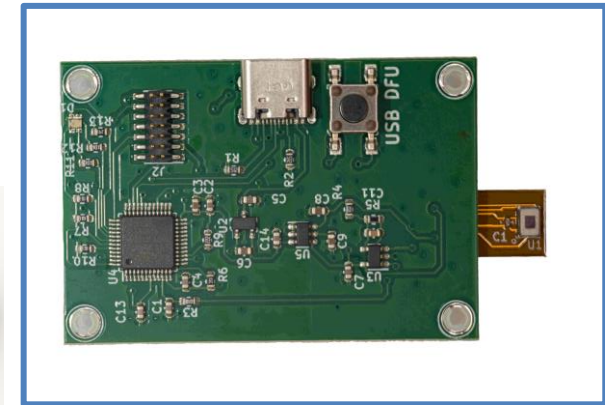
Size of circle equals size of product



JIRS40/JIRS45D – IR PRODUCTS & APPLICATIONS

Contactless temperature measurement

- JonDeTech's IR sensor has the ability to measure the temperature of a surface without being in direct contact with the object. This enables fast and accurate measurement in products such as ear thermometers, small handheld devices such as mobile phones and temperature monitoring in buildings and offices.



Evaluation kit JIRS40

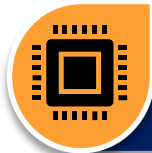
Presence and absence detection

- JonDeTech's IR sensors work perfectly to detect human presence and absence. The sensor detects the heat that a human body radiates and can thus distinguish between a person and other objects. This feature is vital when it comes to getting reliable presence detection in products like laptops, digital door locks or detecting when someone is sitting in a seat in a car or bus.



CO-OP AND PARTNERS

JonDeTech has created a global network of suppliers, distributors, product companies and module houses that enables product development and sales.



The network makes it possible for JonDeTech to create patented proprietary products



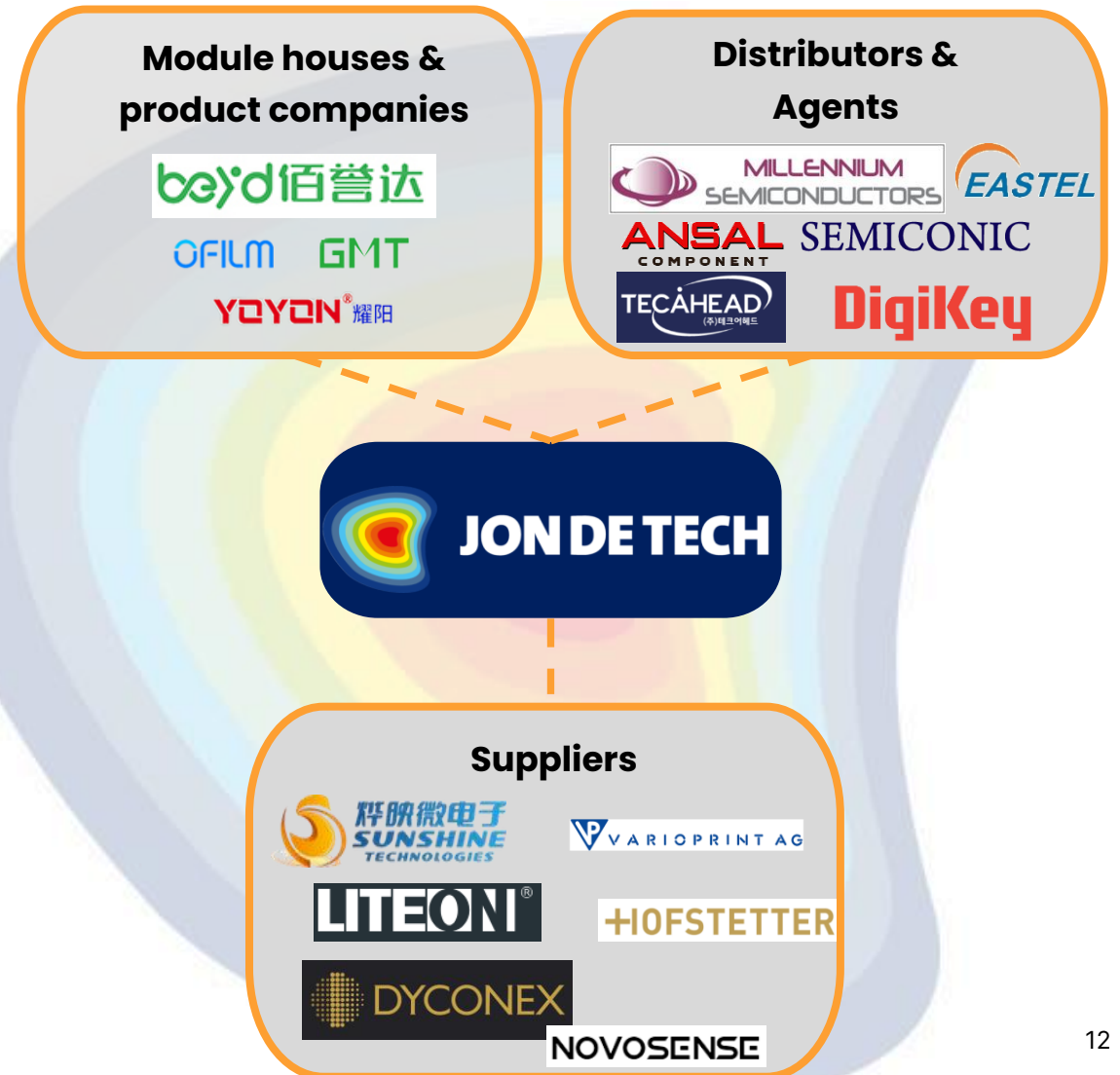
External partners with know-how in manufacturing of sensors creates a scalable business model without high Capex-injections, leading us to reduced production cost



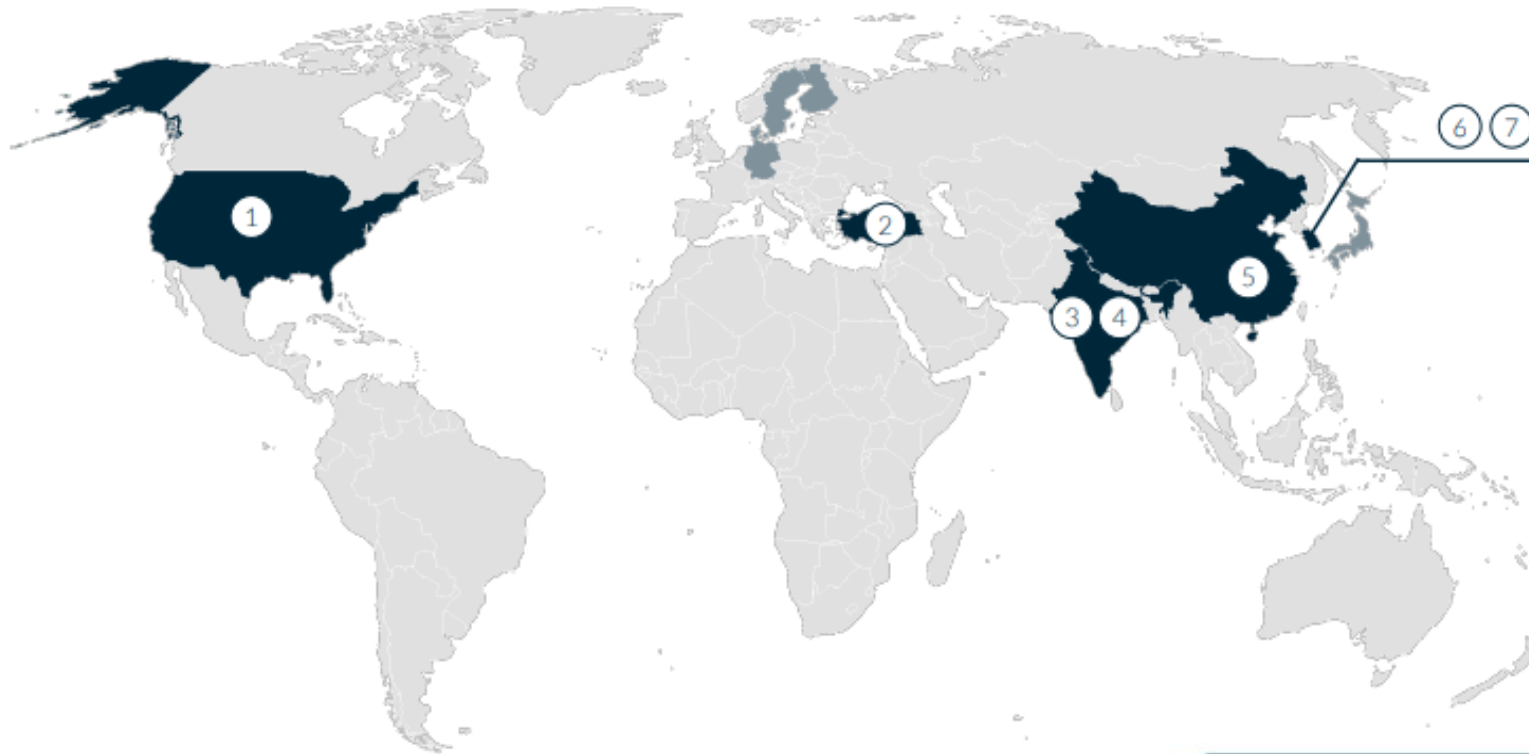
Partnerships will contribute to global sales growth.



JonDeTech is looking to expand its network with digital sales platform, agents and new distribution agreements.



Global distribution



■ Distributörer ■ Agenter



Distributörer

1. **DigiKey**
2. **ANSAL COMPONENT**
3. **SEMICONIC**

4. **MILLENNIUM SEMICONDUCTORS**
5. **be>d 佰誉达**
6. **TECÁHEAD**
7. **EASTEL**

THANK YOU

Contact information



Email

info@jondetech.com



Phone

+46 (0) 703 22 86 63



Website

www.jondetech.com

